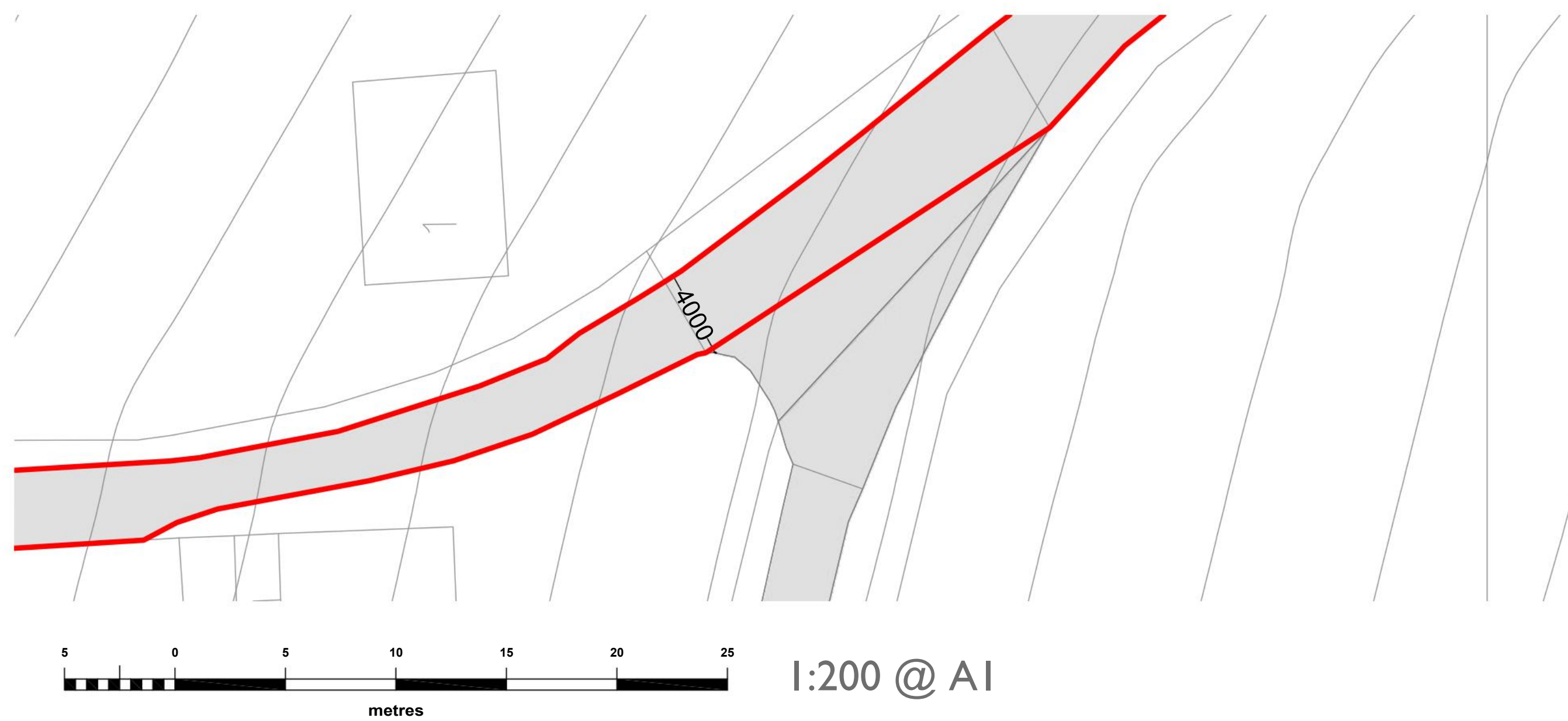
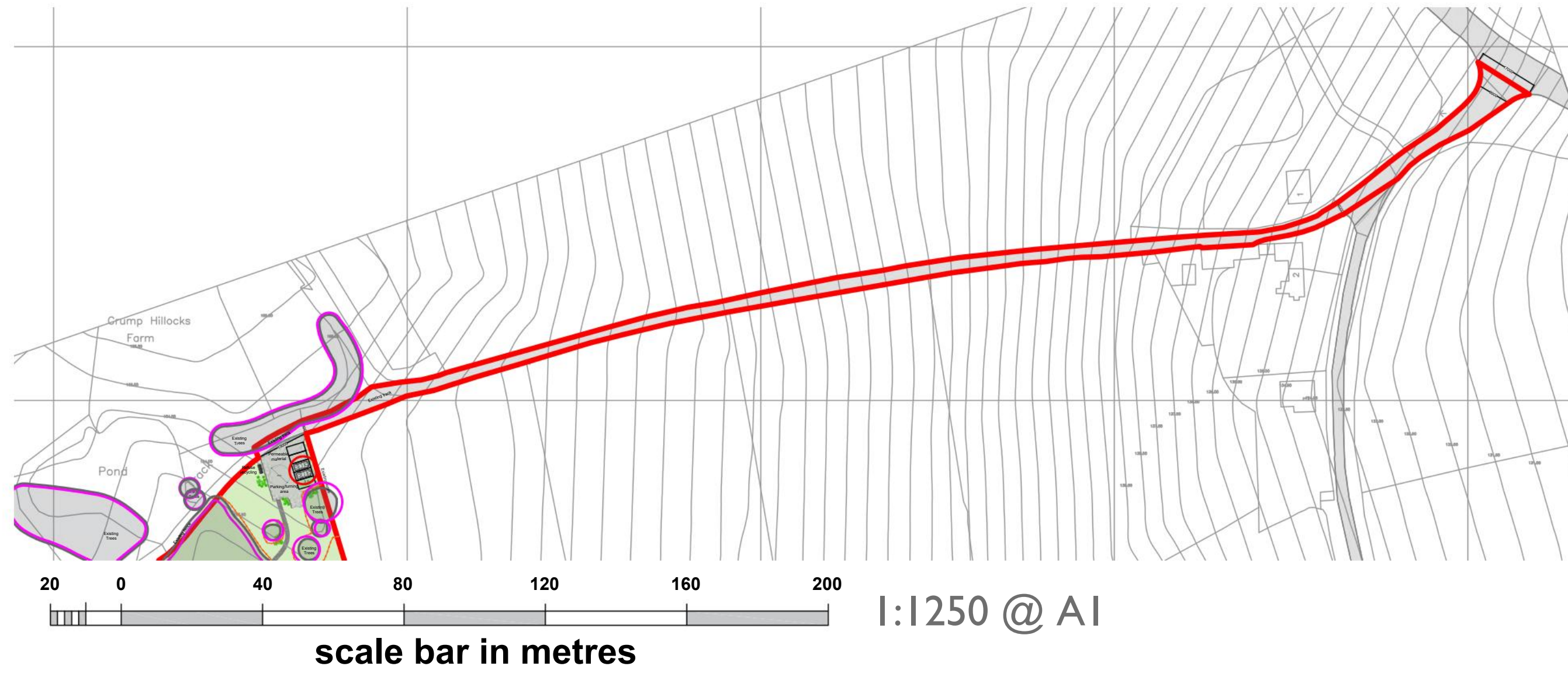


OWNERSHIP BOUNDARY
AREA = 5,813,644 m²

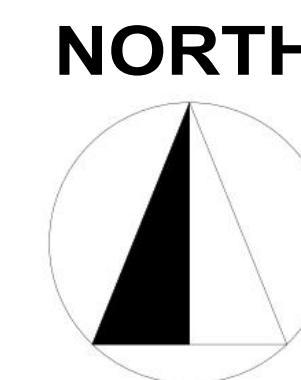
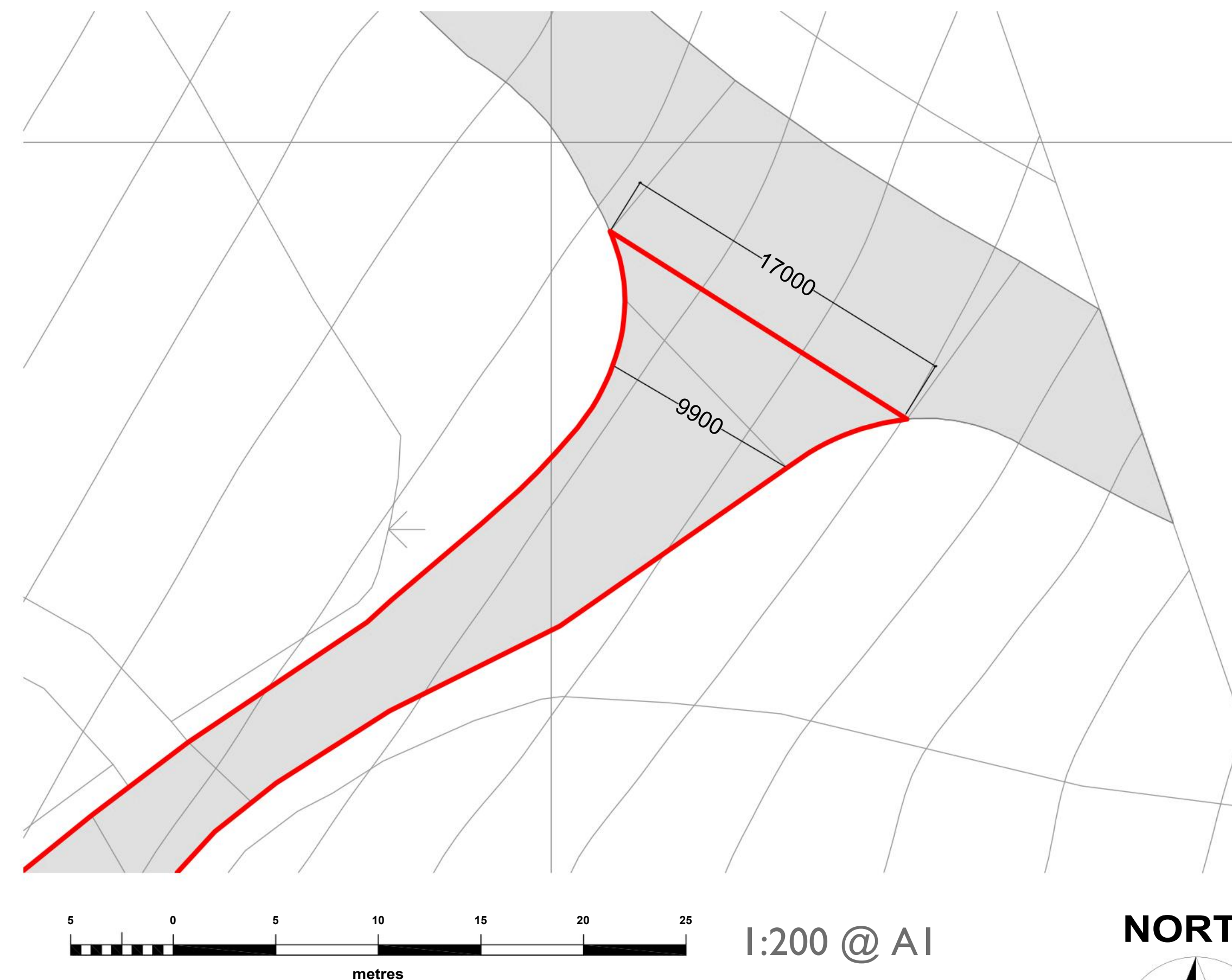
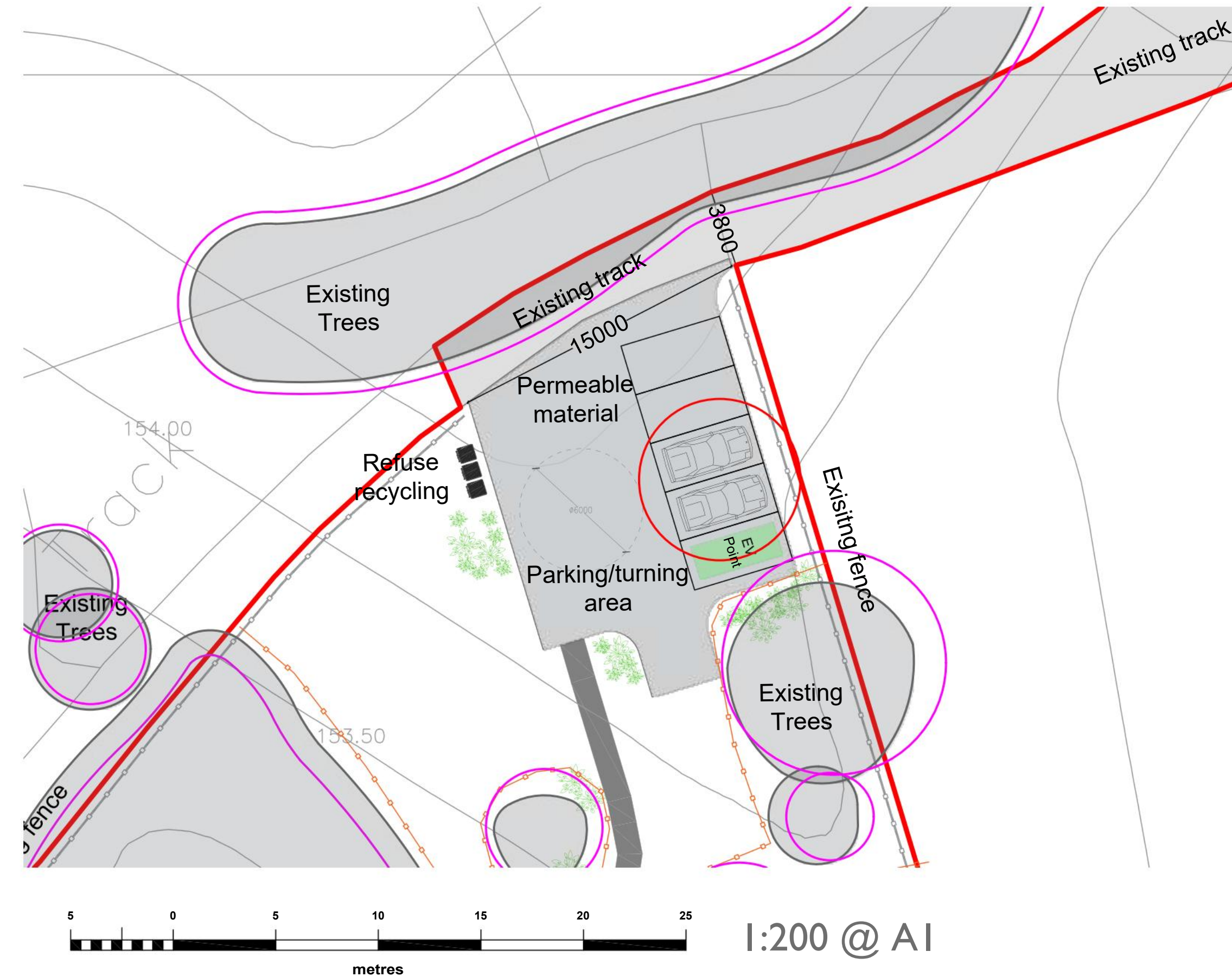
SITE BOUNDARY
SITE AREA = 8,476m²



View of access road on the A458.



View of access road on Bradbury Lane.



Date	Description	Rev	By
Revision Description			
LOCATION PLAN 1:7500			
Project: Proposed Glamping Site - For Stephen Thompson Crump Hillocks Farm, Four Ashes, Nr Stourbridge DY7 5JG			
Drawing Title: ROAD AND ACCESS PLAN			
Drawing Number: 210534-01-07			
Revision: Date: 13.10.2022 Scale: 1:200 @ A1 / 1:1250 @ A1 Drawn By: EF CAD Dwg File: - Checked By: EC			
Issue Status: Full Planning Application			