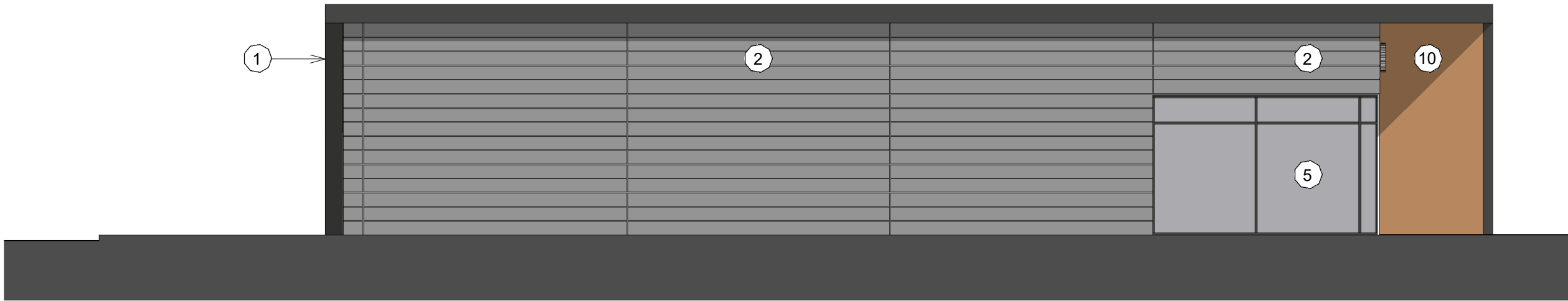


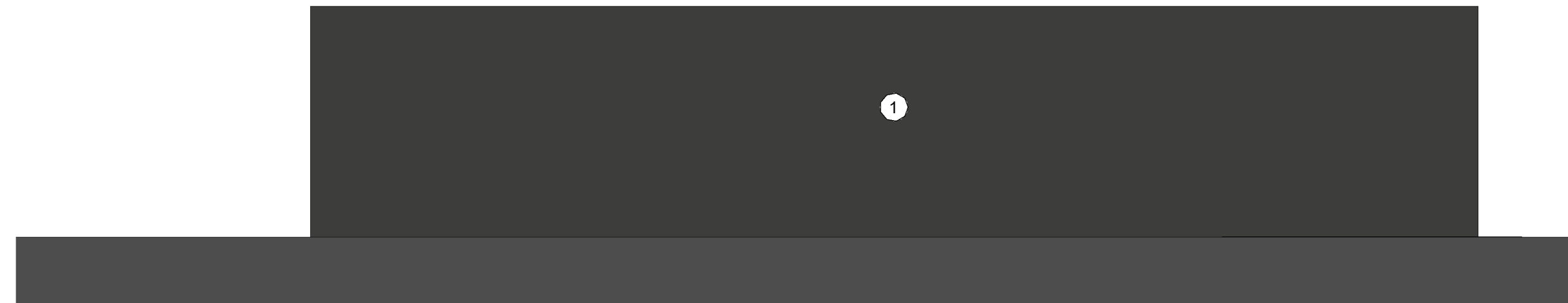
1 Front Elevation  
1 : 100



2 Rear Elevation  
1 : 100



3 North Side Elevation  
1 : 100



4 South Side Elevation  
1 : 100



Visual of North- East Approach

## Notes

### Materials Key

- 1 Kingspan QuadCore Evolution Multi-Groove. Colour: Anthracite Grey (RAL 7016)
- 2 Kingspan QuadCore Evolution Multi-Groove. Colour: Graphite (RAL 9023)
- 3 Kingspan QuadCore KS1000 RW Trapezoidal Wall. Colour: Anthracite Grey (RAL 7016)
- 4 Facing Brickwork. Ibstock Staffordshire Slate Blue Smooth with Dark Grey Mortar
- 5 PPC Aluminium Curtain Walling. Kawneer 1620UT Curtain Wall. Frame Colour: Dark Grey
- 6 PPC Aluminium Window. Frame Colour: Dark Grey
- 7 PPC Aluminium Glazed Shopfront Door. Frame Colour: Dark Grey
- 8 PPC Aluminium Door. Colour: Dark Grey
- 9 PPC Aluminium Rollershutter. Colour: Dark Grey
- 10 Timber Cladding

P06	Issued for Planning	31/03/2020	JEC	JEC
P05	Issued for Public Consultation	24/03/2020	JEC	JEC
P04	Signage location amended. Material Key updated and drawing number changed	17/03/2020	JEC	JEC
P03	Glazing and cladding altered	13/02/2020	LP	CB
P02	Additional Elevations Added	21/01/2020	LP	CB
P01	First issue	17/12/2019	LP	CB
Rev	Description	Date	Dr	App
by			by	by
James CLAYTON		16/12/19	JEC	JEC

**AHR**

AHR Architects Ltd  
First Floor  
Victoria House  
Victoria Quay  
Shrewsbury  
SY1 1HH  
United Kingdom

T +44(0)1743 283000  
F +44(0)1743 232717  
E shrewsbury@ahr.co.uk  
www.ahr.co.uk

client name	Cordwell Property Group		
project	Wombourne Enterprise Park		
drawing	Proposed Elevations - Retail Unit		
computer file	C:\Retail Projects\WEP-AHR-ZZ-XX\A6-L-SITE-IEC3.rvt	plot date	
project number	2016.01216.000	scale	1 : 100 @A1
drawing number	WEP-AHR-00-ZZ-DR-A-05-006	rev	P06
		issue status	
This drawing is to be read in conjunction with all related drawings. All dimensions must be checked and verified on site before commencing any work or producing shop drawings. The originator should be notified immediately of any discrepancy. This drawing is copyright and remains the property of AHR.			