

VIAILITY

	TOTAL
CABINS	51
ADDITIONAL	12
14,400sq Ft	
1338 m²	

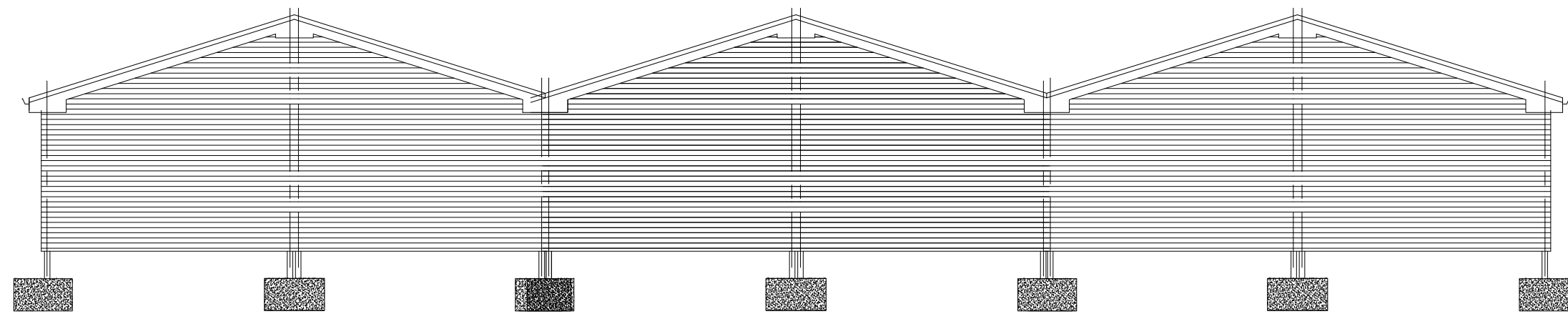
PARKING	752
ADDITIONAL	246

NOTES:
Additional site extension = 0.947Hectares

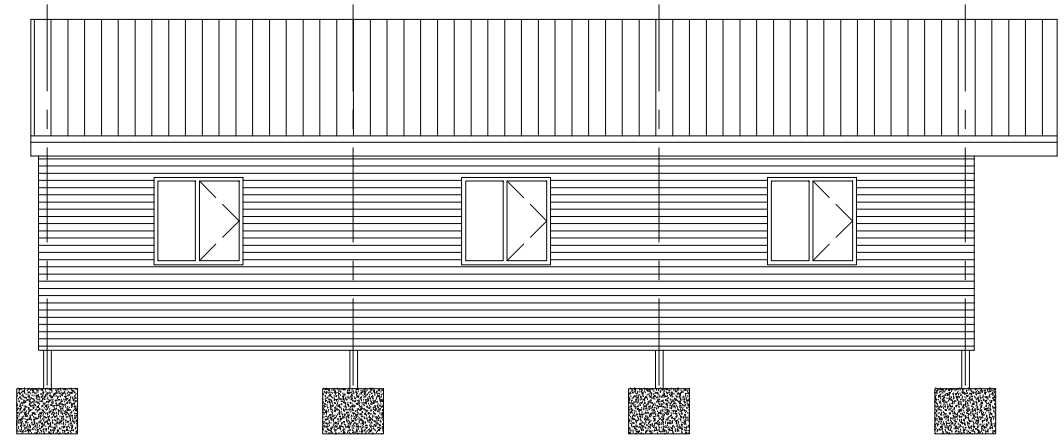
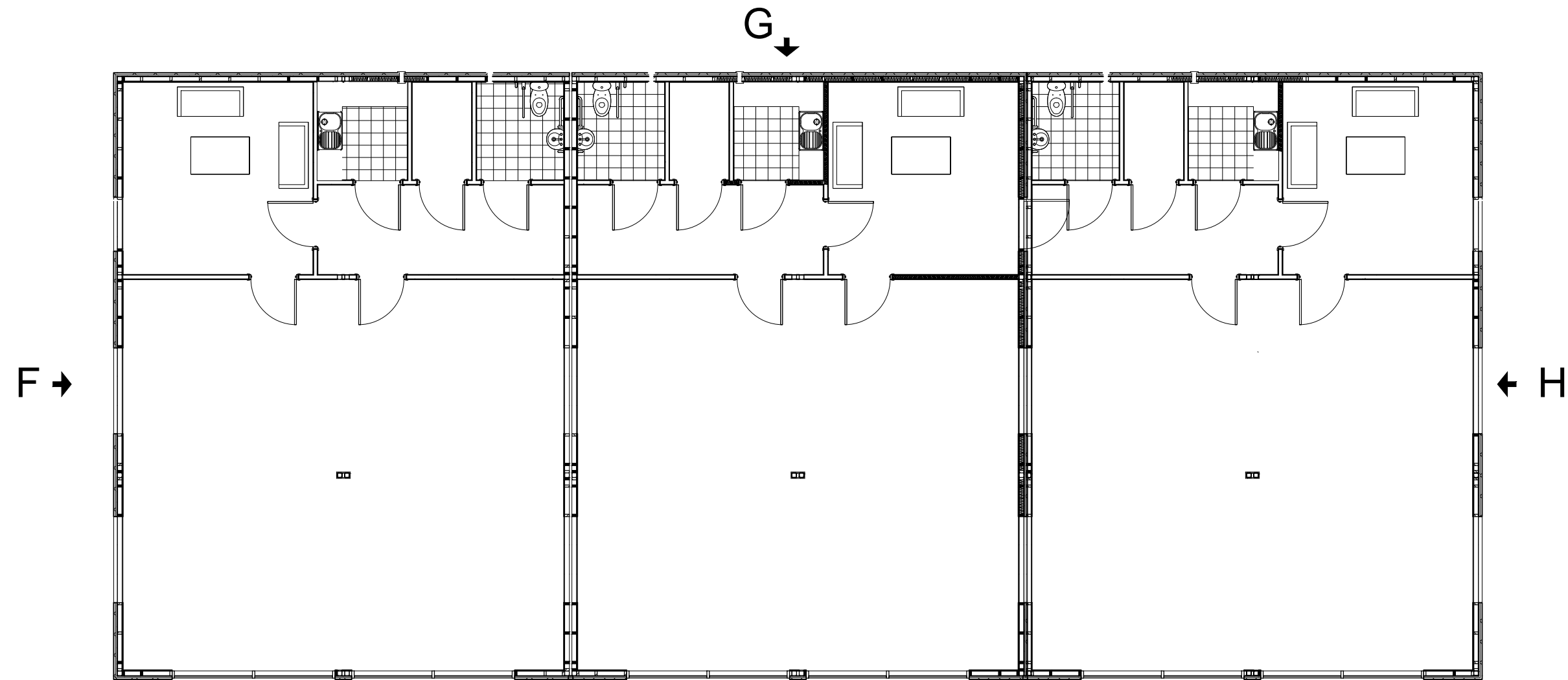
All cabin materials (Walls, roof, doors and windows) and site finishes to match previous planning application (11-00892-FUL)

Each single cabin is 30feet wide, 40 feet in depth.
Each twin cabin is 60feet wide, 40 feet in depth.
Each triple cabin is 90feet wide, 40 feet in depth.
Excluding canopy.

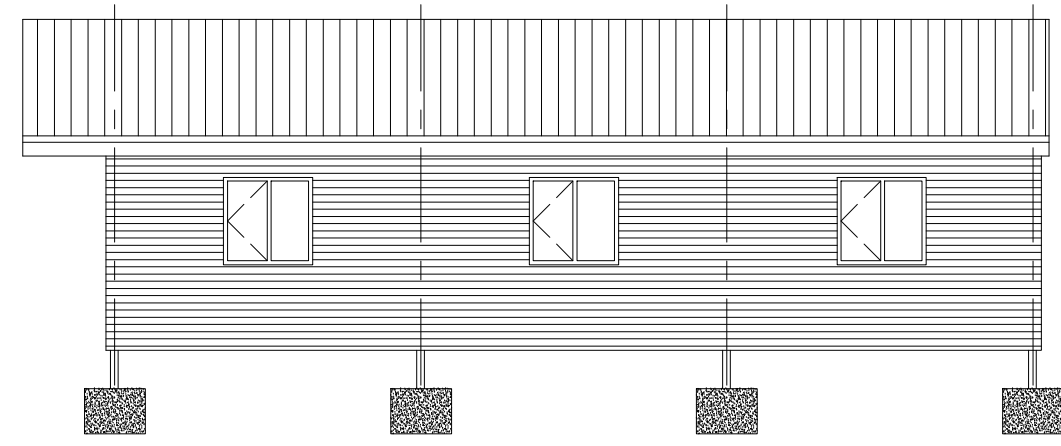
With no "Cut out"



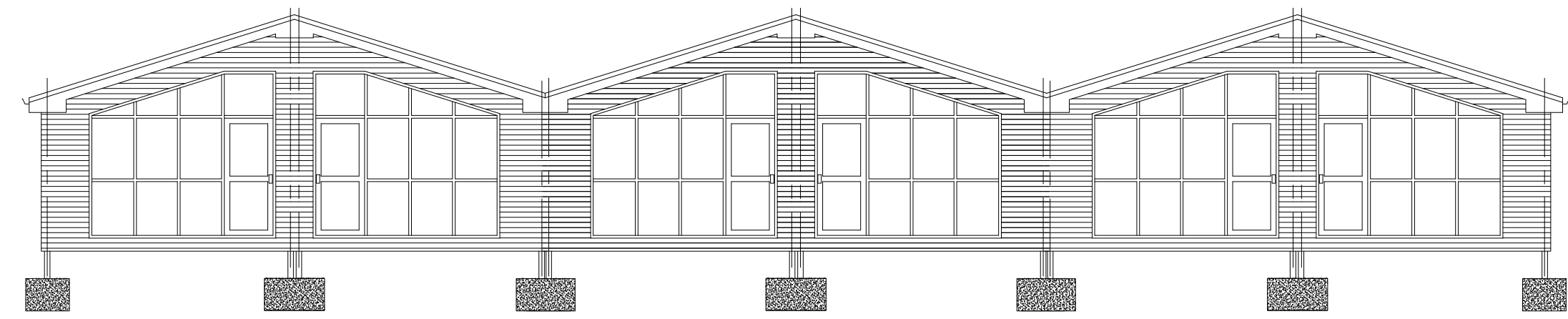
View on arrow G



View on arrow F

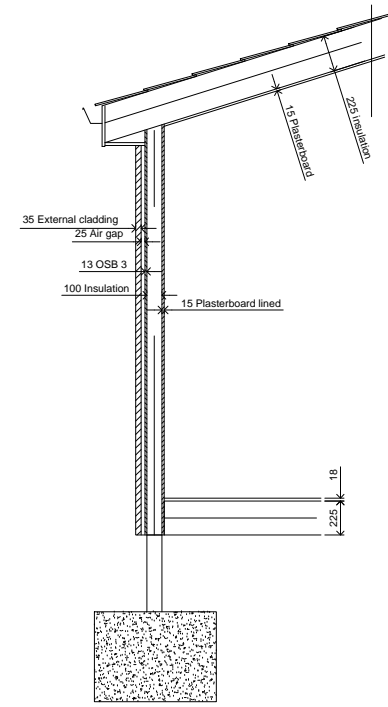


View on arrow H

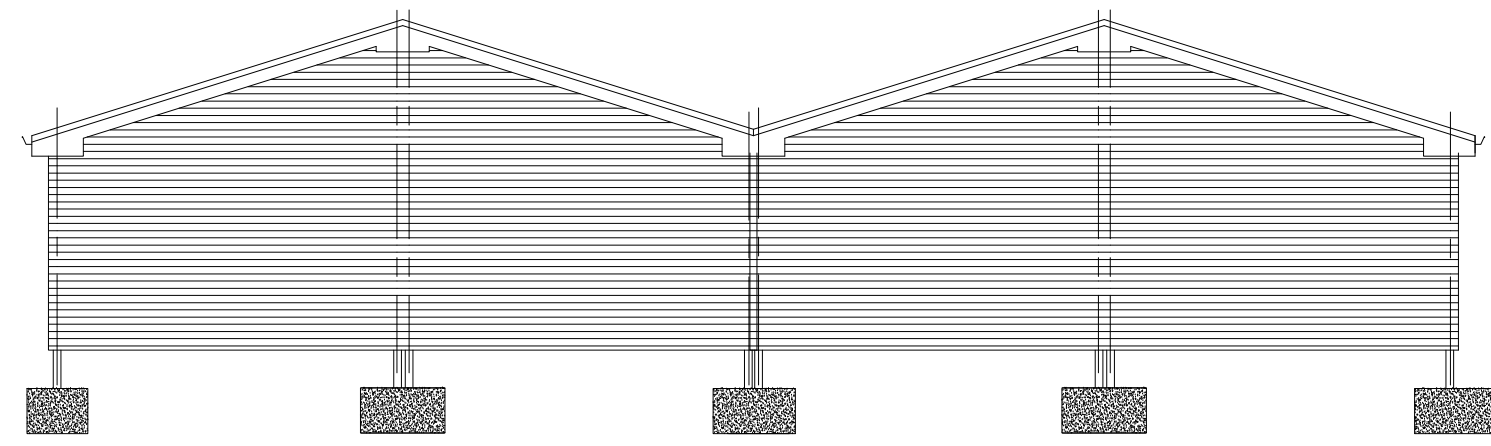


View on arrow E

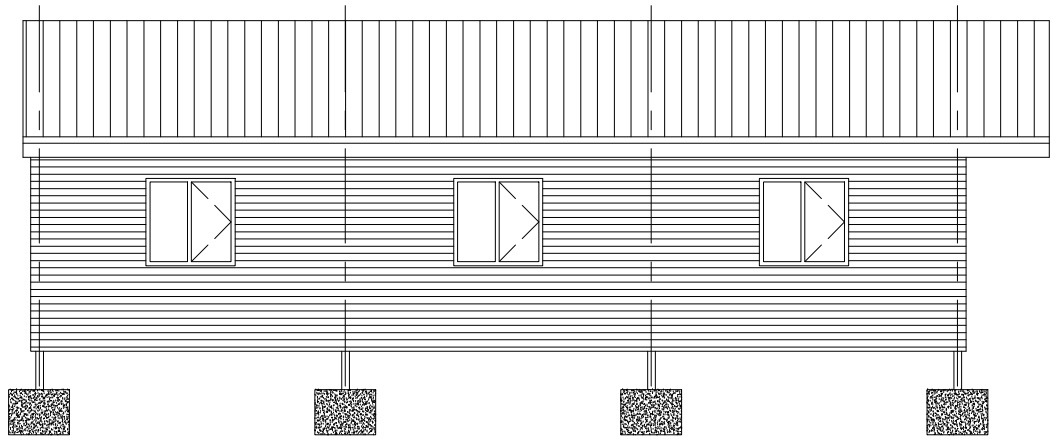
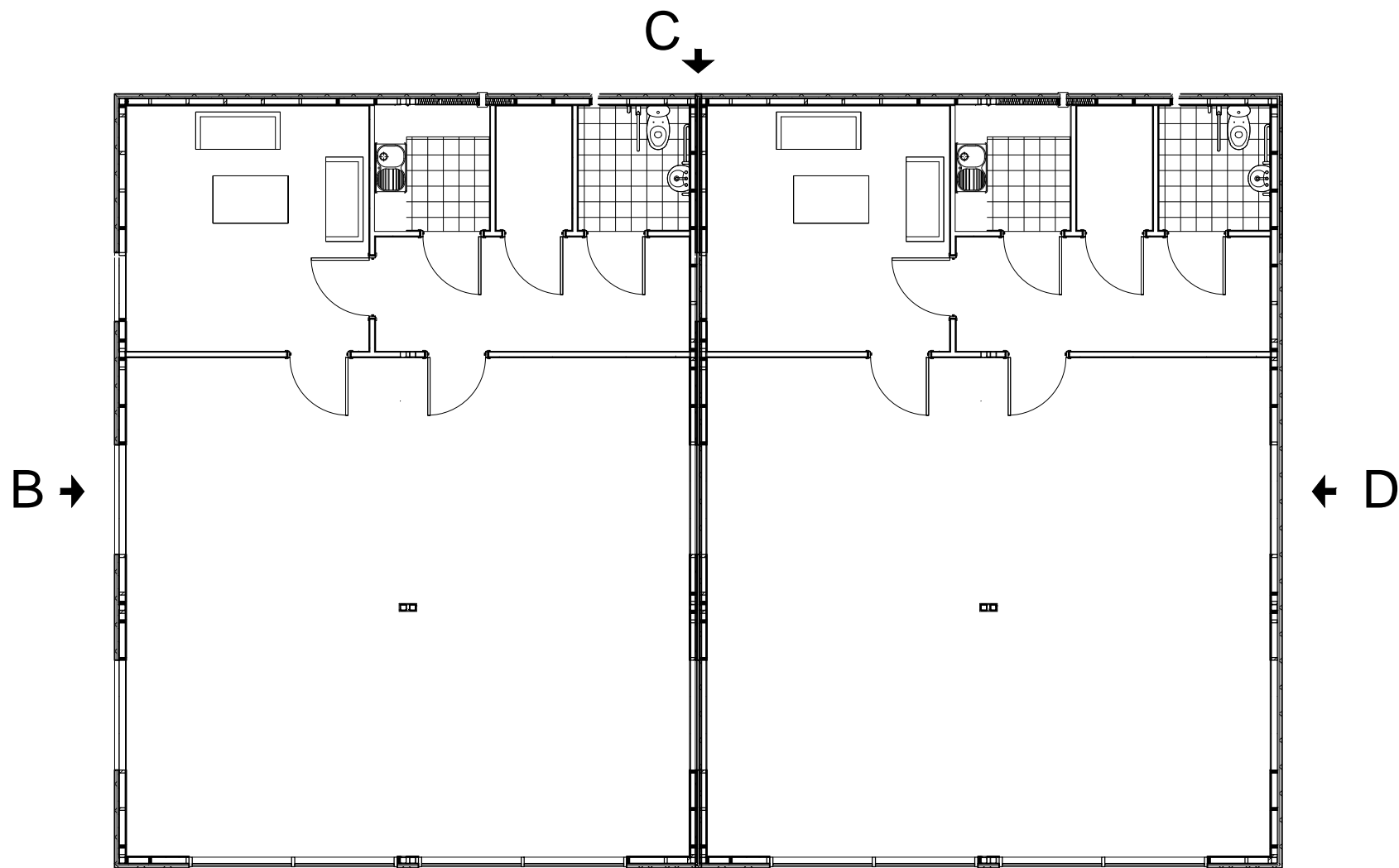
TRIPLE CABIN
90Ft x 40Ft



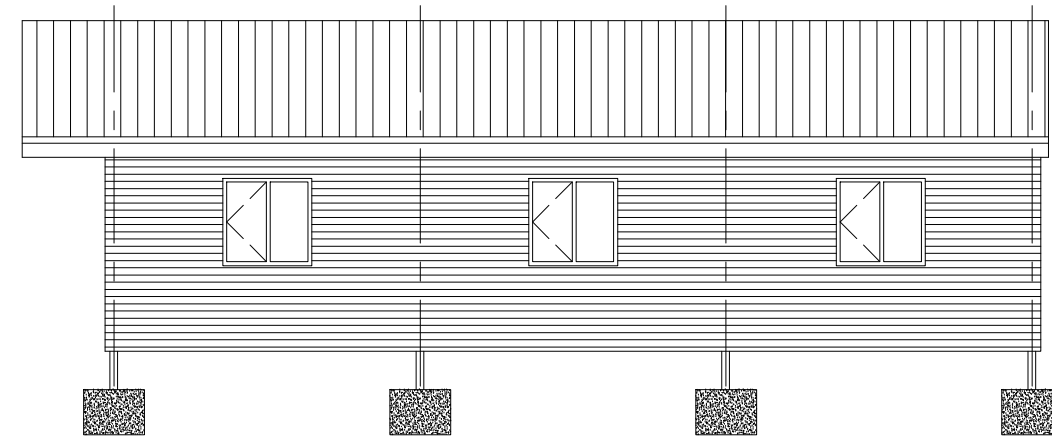
General section
through



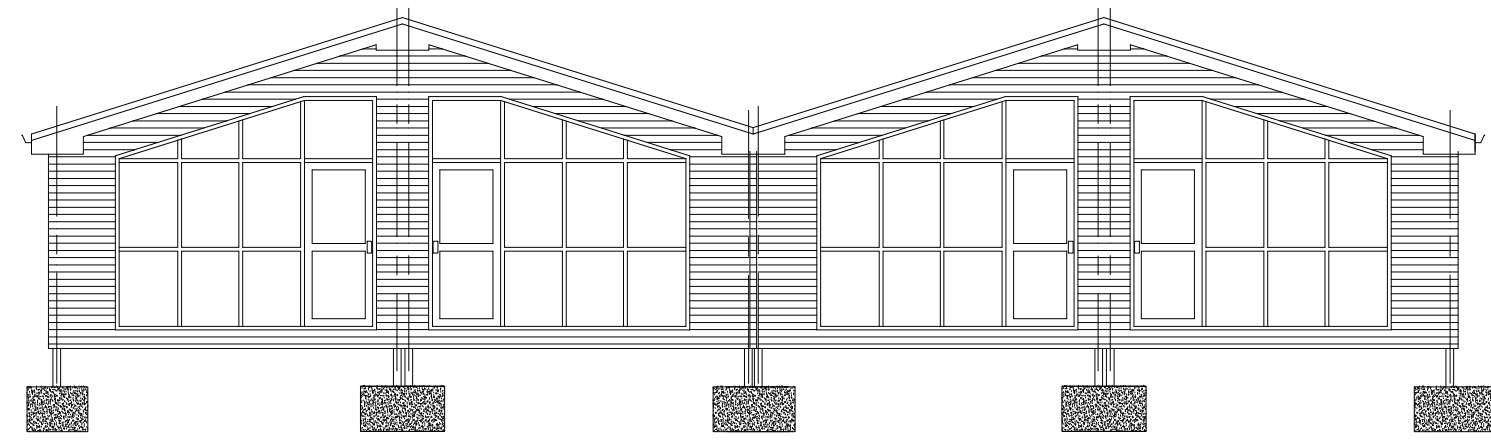
View on arrow C



View on arrow B



View on arrow D



View on arrow A

DOUBLE CABIN
60Ft x 40Ft

revisions:			

- FIRST ISSUE M.B. 08.11.20

DUNSTON BUSINESS VILLAGE

project name
APPLICATION FOR ADDITIONAL LOG CABINS IN DUNSTON BUSINESS VILLAGE

drawing name
CABIN DESIGNS

project no.	40-0819	scale	1:100 & 1:50
drawing no.	DBV-RF-003	revision	-
date	NOV '20	drawn by	M.B.



Dunston Business Village Stafford Road
Dunston Stafford Staffordshire ST19 9AB
01785 711 600 adrian@munstonbusinessvillage.com
www.munstonbusinessvillage.com