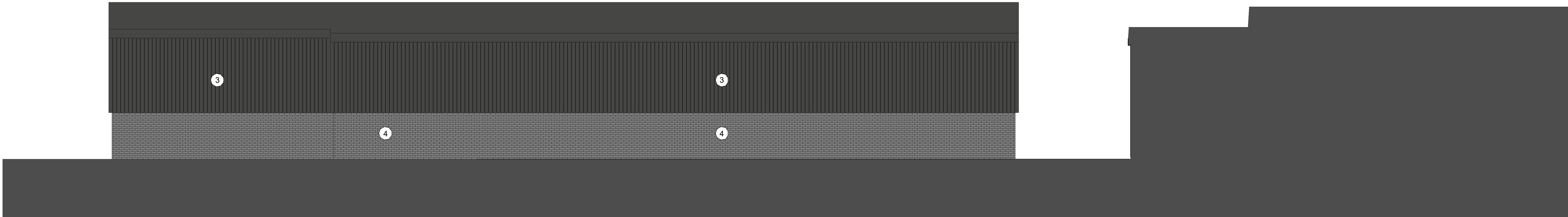
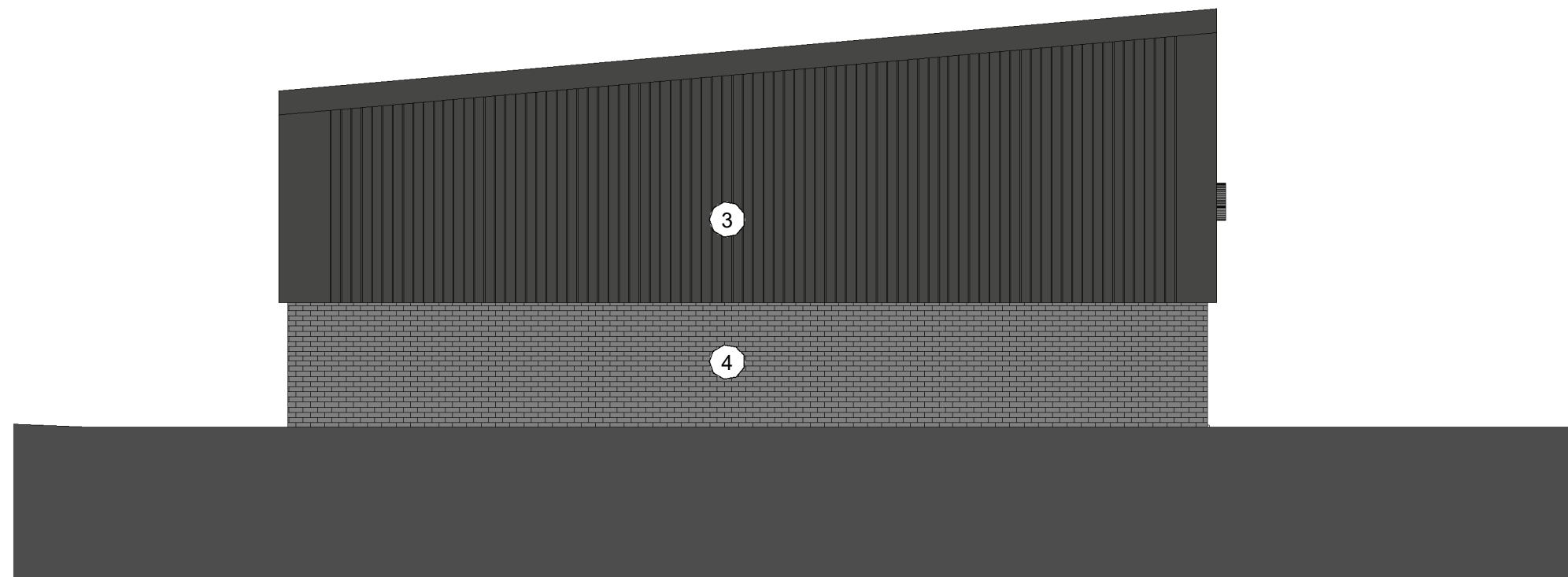


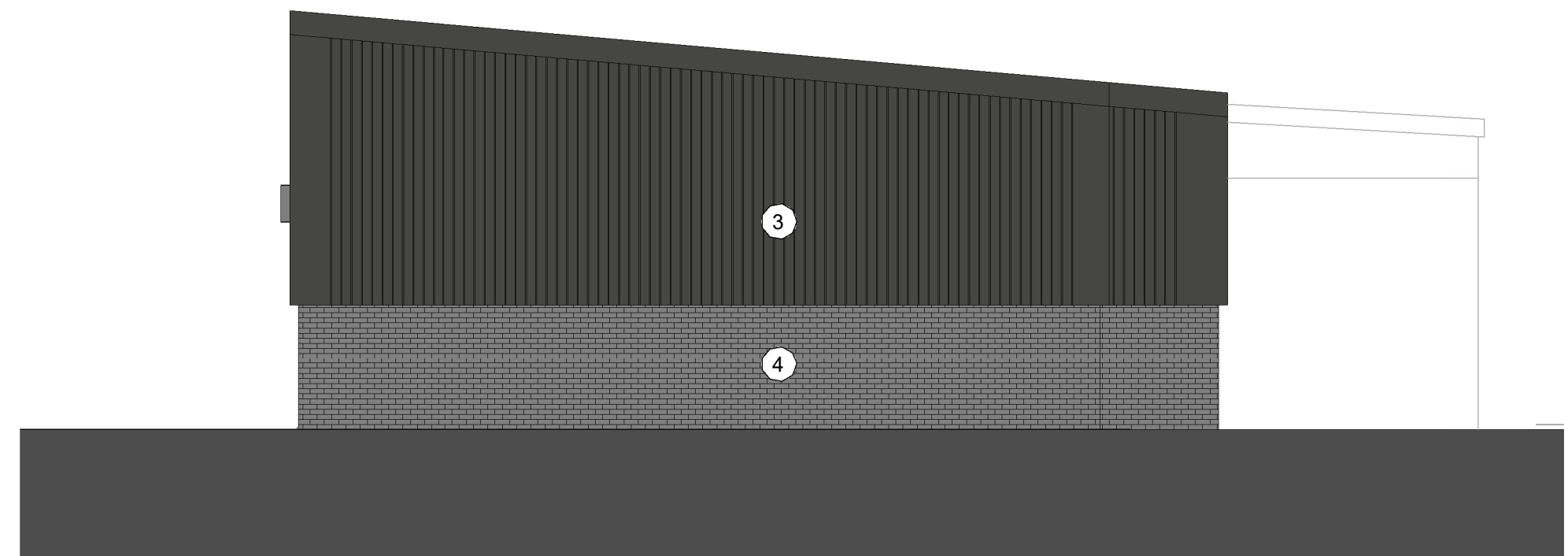
1 Front Elevation
1 : 100



2 Rear Elevation
1 : 100



3 East Side Elevation
1 : 100



4 West Side Elevation
1 : 100



Visual of South West Approach

Notes

- Materials Key
- 1 Kingspan QuadCore Evolution Multi-Groove. Colour: Anthracite Grey (RAL 7016)
 - 2 Kingspan QuadCore Evolution Multi-Groove. Colour: Graphite (RAL 9023)
 - 3 Kingspan QuadCore KS1000 RW Trapezoidal Wall. Colour: Anthracite Grey (RAL 7016)
 - 4 Facing Brickwork. Ibstock Staffordshire Slate Blue Smooth with Dark Grey Mortar
 - 5 PPC Aluminium Curtain Walling. Kawneer 1620UT Curtain Wall. Frame Colour: Dark Grey
 - 6 PPC Aluminium Window. Frame Colour: Dark Grey
 - 7 PPC Aluminium Glazed Shopfront Door. Frame Colour: Dark Grey
 - 8 PPC Aluminium Door. Colour: Dark Grey
 - 9 PPC Aluminium Rollershutter. Colour: Dark Grey
 - 10 Timber Cladding

P03	Issued for Planning	31/03/2020	JEC	JEC
P02	Issued for Public Consultation	24/03/2020	JEC	JEC
P01	First Issue	17/03/2020	JEC	JEC
Rev	Description	Date	Dr	App
by	by	by	by	by
original by	date created	approved by		
James CLAYTON	16/03/20	JEC		



AHR Architects Ltd
First Floor
Victoria House
Victoria Quay
Shrewsbury
SY1 1HH
United Kingdom

T +44(0)1743 283000
F +44(0)1743 232717
E shrewsbury@ahr.co.uk
www.ahr.co.uk

client name			
Cordwell Property Group			
project			
Wombourne Enterprise Park			
drawing			
Proposed Elevations - Industrial Unit			
computer file		plot date	
C:\Revit Projects\WEP-AHR-ZZ-XX-M3-L-SITE-IEC3.rvt			
project number		scale	
2016.01216.000		1 : 100 @A1	
drawing number		rev	issue status
WEP-AHR-00-ZZ-DR-A-05-008		P03	
This drawing is to be read in conjunction with all related drawings. All dimensions must be checked and verified on site before commencing any work or producing shop drawings. The originator should be notified immediately of any discrepancy. This drawing is copyright and remains the property of AHR.			