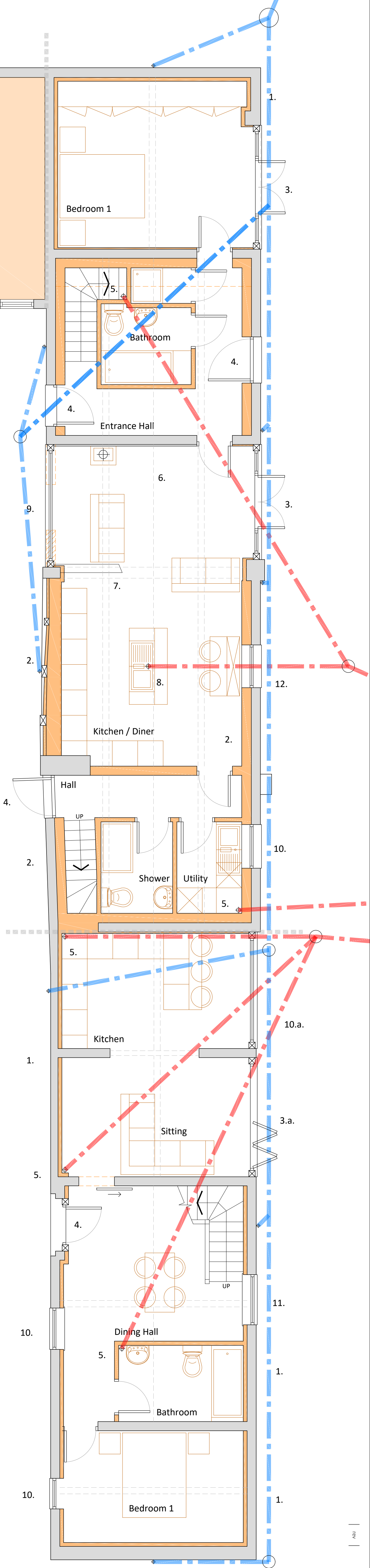


1. Existing 9" brickwork barn (Cart House) to be pointed using hydraulic lime mortar and lined internally with:
- 1.a. Lime base coat plaster
  - 1.b. 120mm "Ty-Mawr" "EcoCork board" adhered to masonry and fixed with insulated fixings,
  - 1.c. Lime top-coat (finish) plaster.
2. Existing timber frame barn (Hayloft) to be lined internally with:
- 2.a. cavity, insulated with 100mm "Ty-Mawr" "Thermafleece Welsh CosyWool Slabs".
  - 2.b. 100mm concrete block work, built up off new concrete underpinning. See engineers' report for details.
  - 2.c. Lime base coat plaster and lime top-coat (finish) plaster.
3. New glazed screen with central double doors in painted accoya, set in oak sub-frame in existing opening.
- 3.a. As above with bi-fold doors.
4. New external door in painted accoya.
5. New soil stack.
6. New log burner with black metal flue to ridge terminal.
7. Existing timber bracing on line of existing truss to be retained.
8. New floor drain for new island.
9. New glazed screen in painted accoya in new oak sub-frame in existing opening.
10. New external window in existing opening.
- 10.a. As above with new vertical painted timber boarding below.
11. New external window in new opening, where existing brickwork has cracked below tie bar.
12. New external window in new opening.
13. New conservation style roof light over.
14. Timber frame to be exposed externally and infilled with either;
- 14.a. reclaimed brickwork in lime mortar, tied into timber frame in every course or
  - 14.b. horizontal timber cladding on a softwood frame with mineral wool insulation infill and lined internally with plywood to receive new angle wall ties for inner leaf.

Ecology Notes:

- A. Location of proposed bat loft. See ecology report for construction and access details.

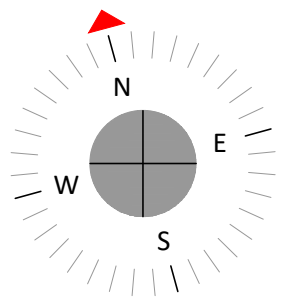


project title  
Conversion of Listed Barns @:  
Leper House, Whitehouse Lane, Codsall

drawing title  
Proposed Ground Floor Plan

job no.  
0415  
work stage  
WS3  
drawing no.  
060  
rev

scale  
1:50 @ A1  
date  
October 2020  
purpose  
Planning



date | drawn | checked | rev |