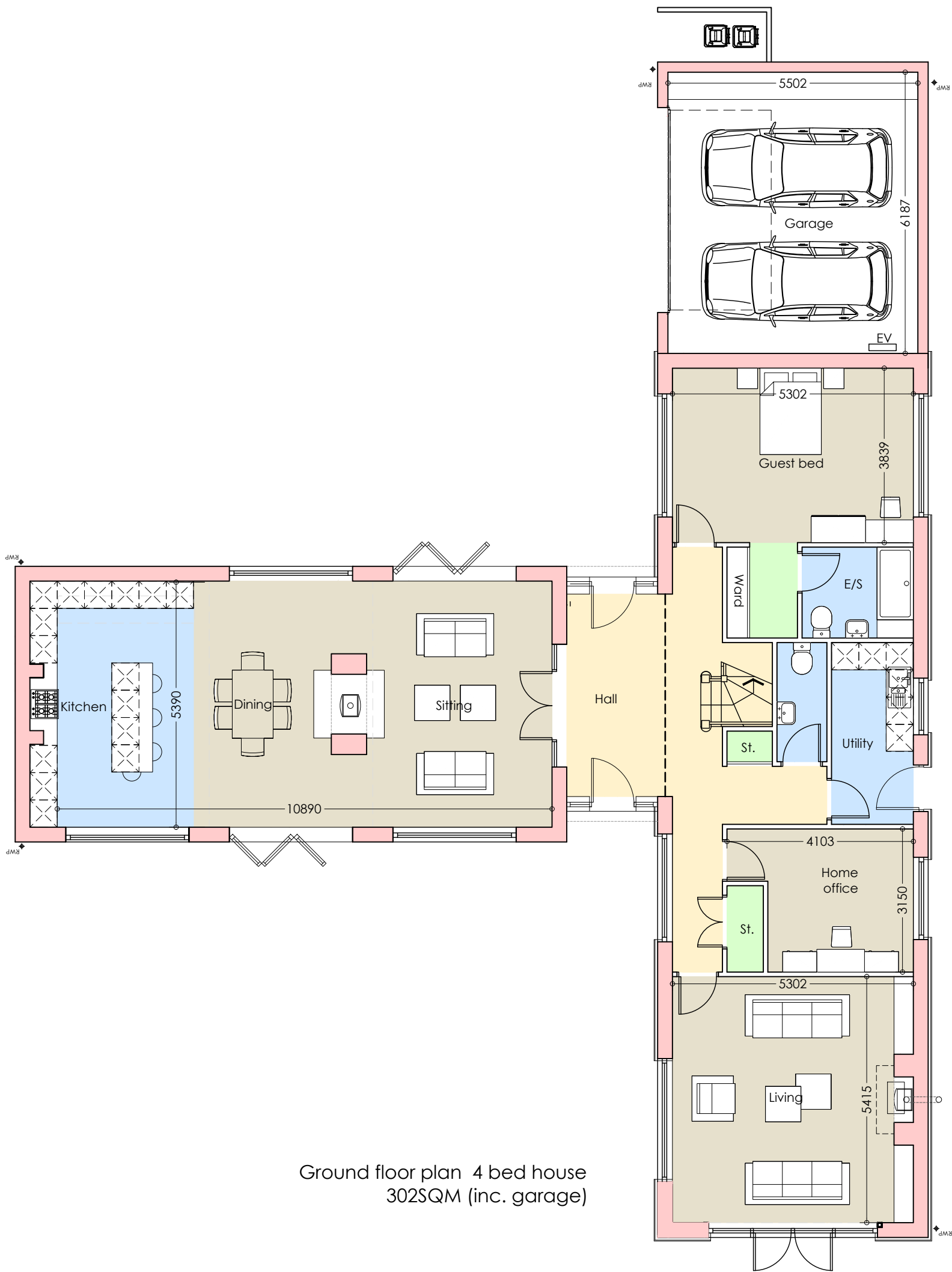
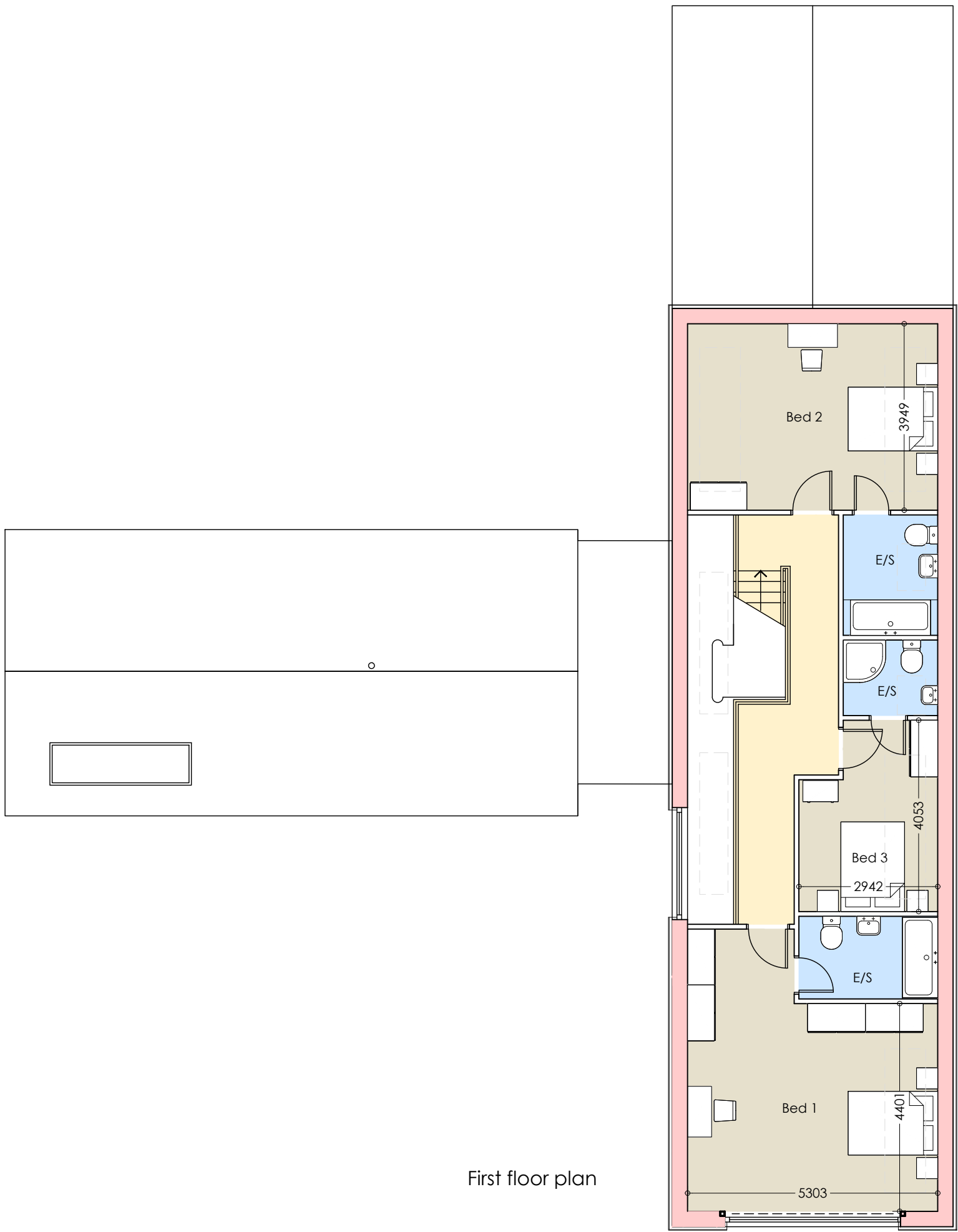


Materials (see also dwg ref.):

1. natural slate tile
2. Red facing brickwork
3. Horizontal timber cladding-Black
4. Aluminium clad window-Grey



Ground floor plan 4 bed house
302SQM (inc. garage)



First floor plan

COPYRIGHT NOTICE:
This drawing is the copyright of the Architects and may not be reproduced or used except by written permission.

©Crown copyright and database rights 2014 Ordnance Survey licence number 100047214

Notes
This drawing is to be read in conjunction with all relevant drawings and specifications.
Do not scale from this drawing. Use figure dimensions only. All levels and dimensions to be checked on site. All level and dimensional discrepancies are to be brought to the immediate attention of HSP Architects Ltd.
Responsibility cannot be accepted for alterations or deviations from this design without prior acknowledgement of HSP Architects Ltd.
Copyright reserved. This drawing may only be used for the client and location specified in the title block. It may not be copied or otherwise used in any other form without prior written consent from HSP Architects Ltd.
Prior to any works commencing on site, the engineer is to be contacted regarding the current status, revision or regulatory approval of the drawing.
All work is to be done under the supervision of the HSP or Local Authority for engineering approval, given or indicated on these drawings. All workmanship and materials to be the best of their respective kind and of best material of the appropriate British Standard Code of Practice. All relevant dimensions and levels to be dimensioned or checked and verified on site before specific areas of work are commenced.
This drawing is to be read in conjunction with relevant specifications, requirements and structural engineers design.



PLANNING

Rev.	Date	Drawn
1	17-09-19	JCB
2	17-09-19	JCB
3	17-09-19	JCB
4	17-09-19	JCB
5	17-09-19	JCB
6	17-09-19	JCB
7	17-09-19	JCB
8	17-09-19	JCB
9	17-09-19	JCB
10	17-09-19	JCB
11	17-09-19	JCB
12	17-09-19	JCB
13	17-09-19	JCB
14	17-09-19	JCB
15	17-09-19	JCB
16	17-09-19	JCB
17	17-09-19	JCB
18	17-09-19	JCB
19	17-09-19	JCB
20	17-09-19	JCB
21	17-09-19	JCB
22	17-09-19	JCB
23	17-09-19	JCB
24	17-09-19	JCB
25	17-09-19	JCB
26	17-09-19	JCB
27	17-09-19	JCB
28	17-09-19	JCB
29	17-09-19	JCB
30	17-09-19	JCB
31	17-09-19	JCB
32	17-09-19	JCB
33	17-09-19	JCB
34	17-09-19	JCB
35	17-09-19	JCB
36	17-09-19	JCB
37	17-09-19	JCB
38	17-09-19	JCB
39	17-09-19	JCB
40	17-09-19	JCB
41	17-09-19	JCB
42	17-09-19	JCB
43	17-09-19	JCB
44	17-09-19	JCB
45	17-09-19	JCB
46	17-09-19	JCB
47	17-09-19	JCB
48	17-09-19	JCB
49	17-09-19	JCB
50	17-09-19	JCB
51	17-09-19	JCB
52	17-09-19	JCB
53	17-09-19	JCB
54	17-09-19	JCB
55	17-09-19	JCB
56	17-09-19	JCB
57	17-09-19	JCB
58	17-09-19	JCB
59	17-09-19	JCB
60	17-09-19	JCB
61	17-09-19	JCB
62	17-09-19	JCB
63	17-09-19	JCB
64	17-09-19	JCB
65	17-09-19	JCB
66	17-09-19	JCB
67	17-09-19	JCB
68	17-09-19	JCB
69	17-09-19	JCB
70	17-09-19	JCB
71	17-09-19	JCB
72	17-09-19	JCB
73	17-09-19	JCB
74	17-09-19	JCB
75	17-09-19	JCB
76	17-09-19	JCB
77	17-09-19	JCB
78	17-09-19	JCB
79	17-09-19	JCB
80	17-09-19	JCB
81	17-09-19	JCB
82	17-09-19	JCB
83	17-09-19	JCB
84	17-09-19	JCB
85	17-09-19	JCB
86	17-09-19	JCB
87	17-09-19	JCB
88	17-09-19	JCB
89	17-09-19	JCB
90	17-09-19	JCB
91	17-09-19	JCB
92	17-09-19	JCB
93	17-09-19	JCB
94	17-09-19	JCB
95	17-09-19	JCB
96	17-09-19	JCB
97	17-09-19	JCB
98	17-09-19	JCB
99	17-09-19	JCB
100	17-09-19	JCB