

1. All reveals to be lined with Cork Board and finished with lime plaster skim.
2. 22mm stained hardwood window boards on 25mm Cork board.
3. 90 x 73mm hardwood window sills.
4. 70 x 44mm softwood frame to opening sash.
5. 22 x 25mm softwood beading.
6. 90 x 70mm softwood jambs.
7. 90 x 70mm softwood head
8. 90 x 60mm softwood transoms.
9. 90 x 60mm softwood mullions.
10. Rubber seal.
11. Routed drip.
12. Water bar rebate.
13. 76 x 50mm softwood door frame with drip to head.

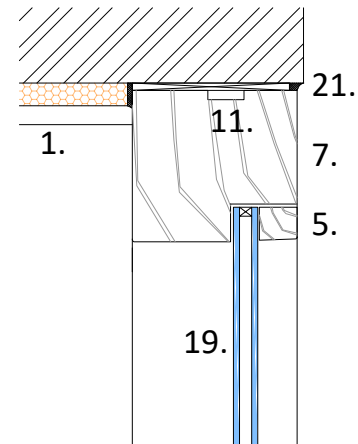
14. 76 x 50mm softwood door frame jamb.
15. Aluminium threshold with drainage holes. At least 1 entrance door to be accessible with 800mm clear opening and level threshold.
16. Door to be 60mm thick.
17. 18 x 18mm softwood beading.
18. New DPC below new hardwood door sills. Perimeter floor insulation to be installed behind sill.
19. Double glazing to be 12mm thick - 4 glass/4 argon filled cavity/4 glass.
20. All hinges and ironmongery to be brushed stainless steel.
21. Silicone seal between frame and masonry, internally and externally. Colour to match window.

All hardwood to be primed with an aluminium primer then decorated with:

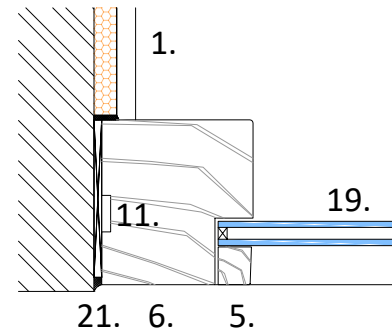
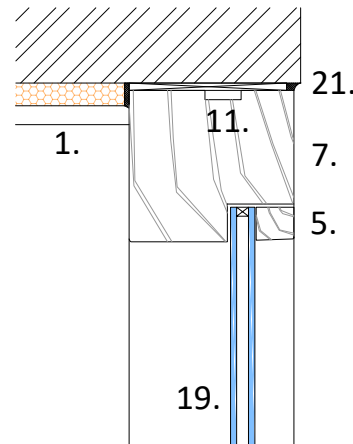
- a. The first chemical preservation stage is completed by direct dipping of the timber window into the preservative solution to protect against moisture absorption.
- b. The second chemical preservation stage is completed by direct dipping of the timber window into the preservative solution to protect against fungi, pests and mould.
- c. Aluminium primer and undercoats are applied. Dulux Weathershield undercoat. Colour to be country cream.
- d. First top coat is machine sprayed to frame.
- e. Finish top coat is machine sprayed onto the frame.
- f. Glazing and beading is fitted.
- g. Frames touched up by hand.

rev	date	drawn	ch'k'd
A	02/12/20	SGP	

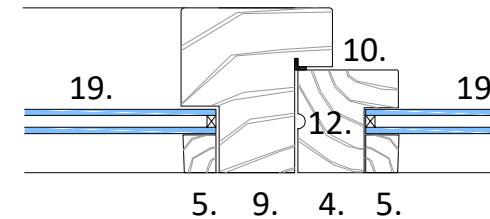
Glazing specification updated



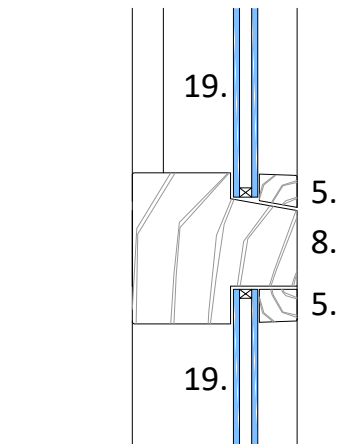
Typical Heads



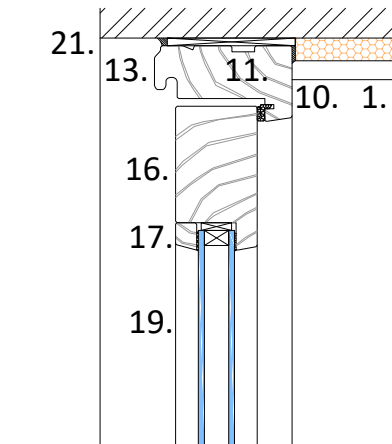
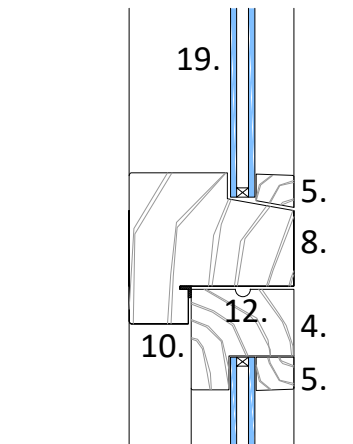
Typical Window Jambs



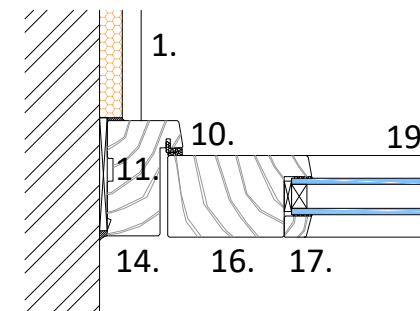
Typical Window Mullions



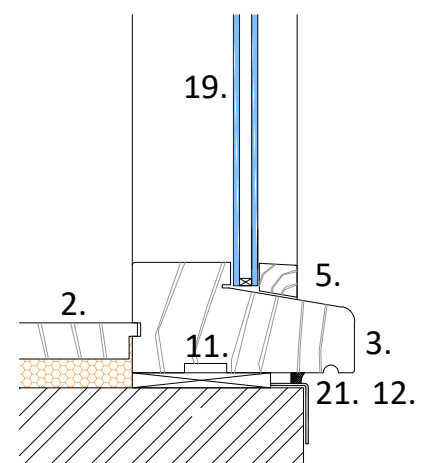
Typical Transoms



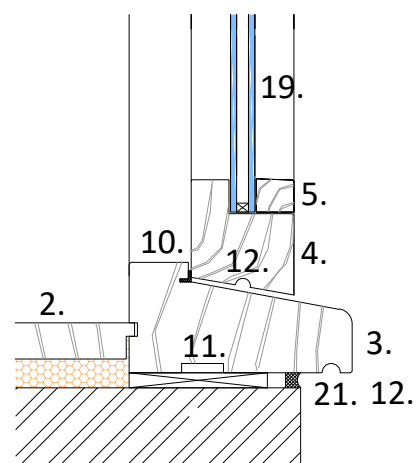
Typical Door Head



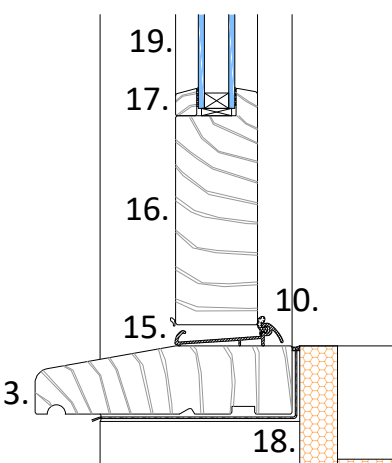
Typical Door Jamb



Typical Sills
Fixed Light Window Details



Opening Light Window Details



Typical Door Threshold



project title
Conversion of Listed Barns @:
Leper House, Whitehouse Lane, Codsall

drawing title
Window & External Door Details

job no.	work stage	drawing no.	rev
0415	WS3	100	A

scale	date
1:5 @ A3	September 2020

purpose
Planning

